

D.A.V. COLLEGE, PUNDRI, KAITHAL-136026

Student Satisfaction Survey

(2023-2024)

Key Indicator - 2.7.1

Under Criterion II of Teaching–Learning and Evaluation

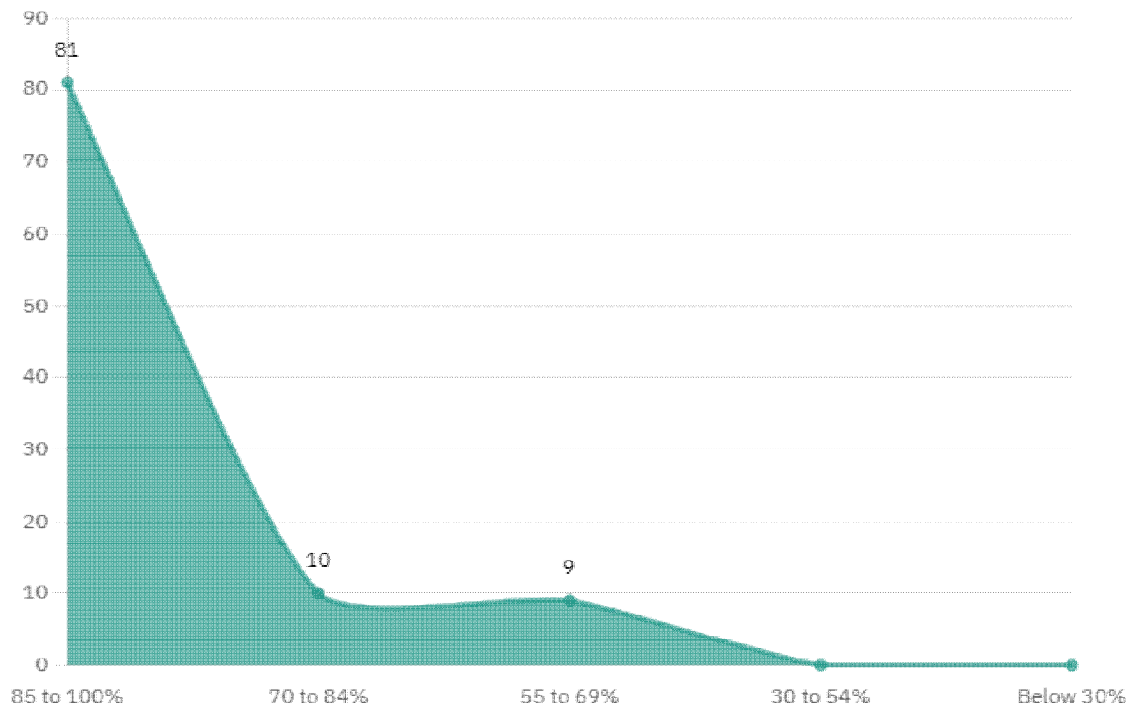
Guidelines for Students

NAAC (National Assessment and accreditation council) is conducting a Student Satisfaction Survey regarding Teaching– Learning and Evaluation, which will help to upgrade the quality in higher education. A student will have to respond to all the questions given in the following format with her/his sincere effort and thought. Her/his identity will not be revealed.

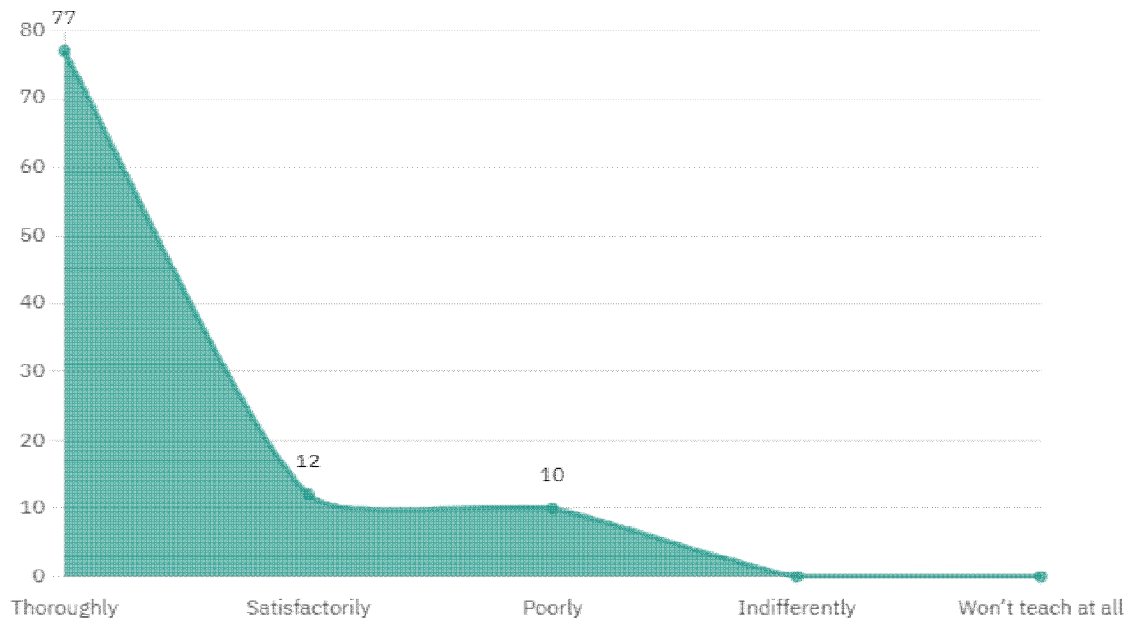
Sample Size:- 100 (Students)

- A) Please confirm this is the first and only time you answer this survey:- **YES**
- B) Age:-17 Year to 22 Years
- C) College Name:- **DAV COLLEGE PUNDRI, KAITHAL**
- D) Gender:- **MALE & FEMALE**
- E) What degree program are you pursuing now:- **Bachelor's**
- F) What subject area are you currently pursuing:- **Arts & Commerce**

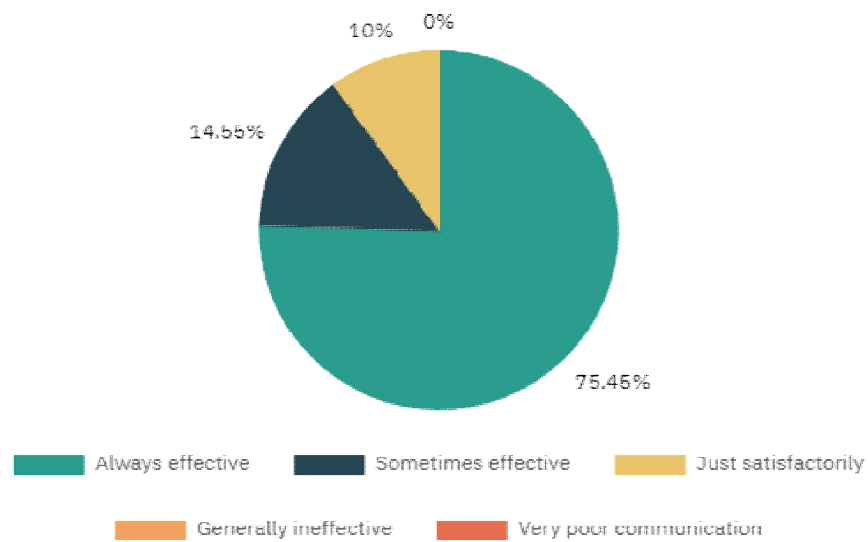
Q1. HOW MUCH OF THE SYLLABUS WAS COVERED IN THE CLASS ?



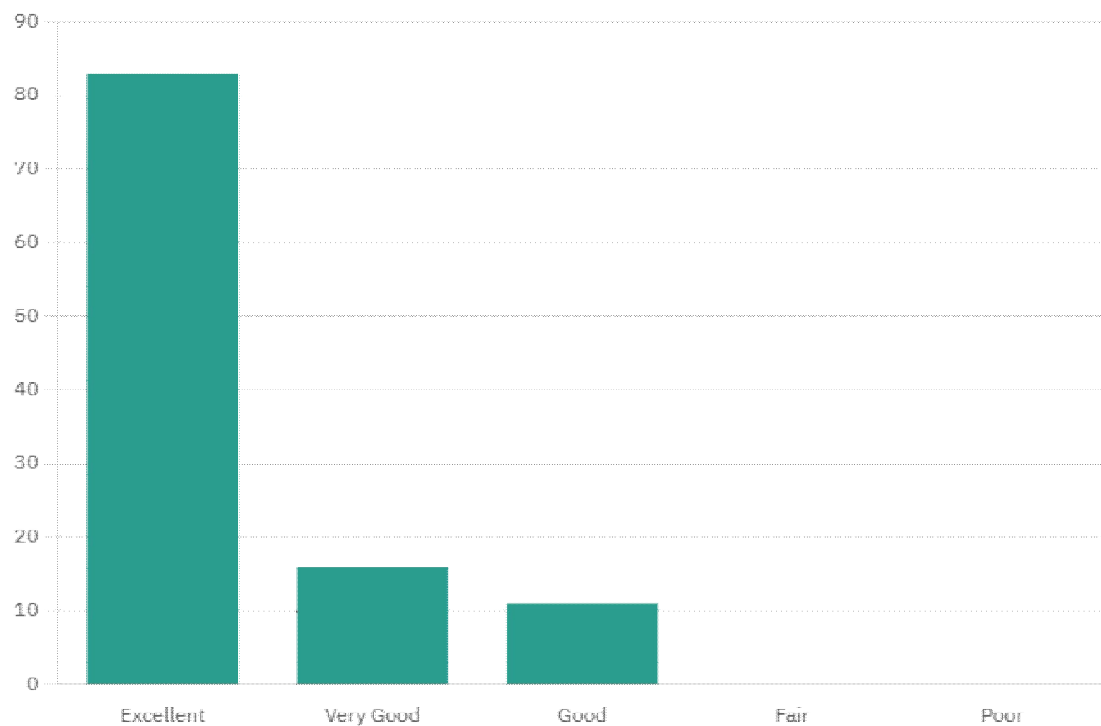
Q2. HOW WELL DID THE TEACHERS PREPARE FOR THE CLASSES ?



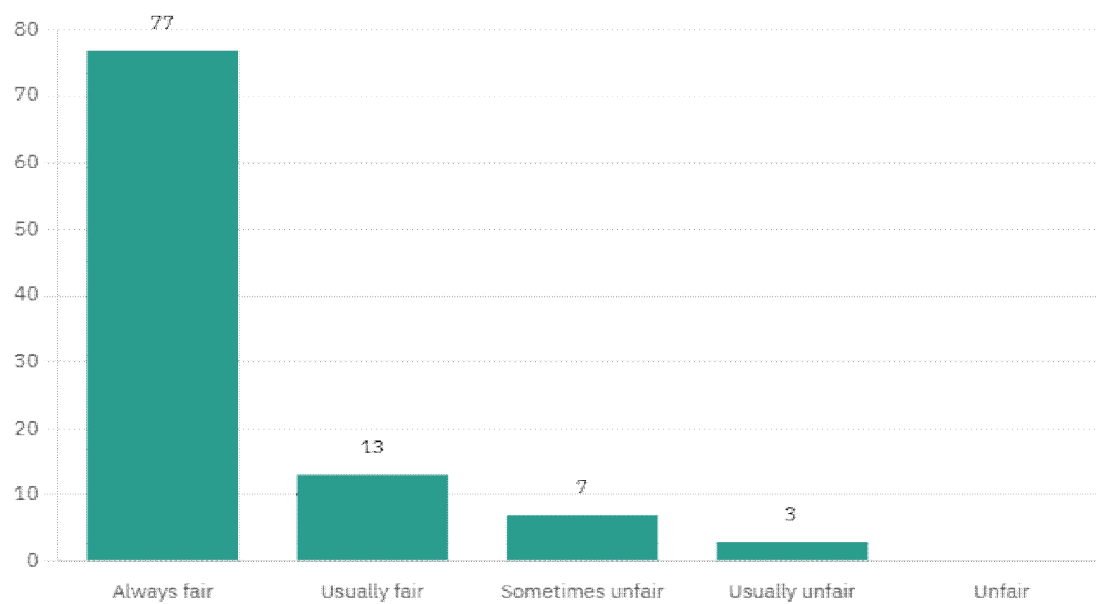
Q3. HOW WELL WERE THE TEACHERS ABLE TO COMMUNICATE?



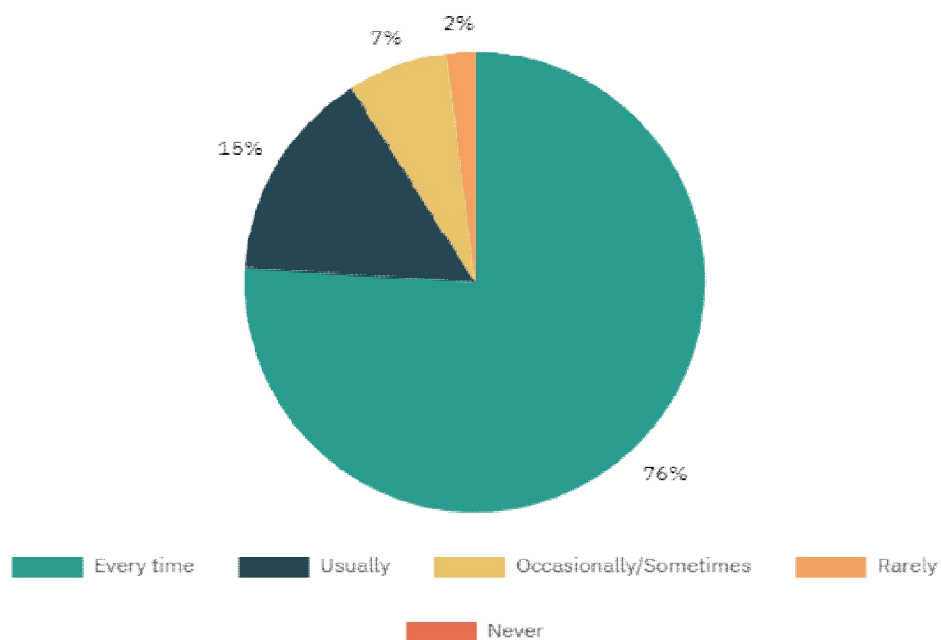
Q4. THE TEACHER'S APPROACH TO TEACHING CAN BEST BE DESCRIBED AS



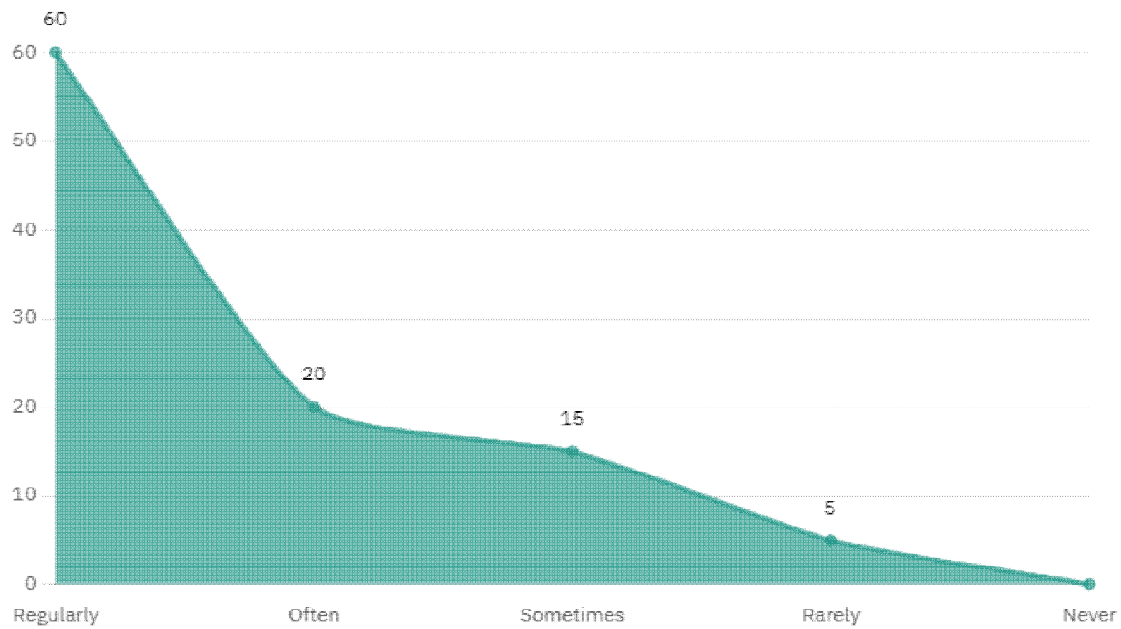
Q5. FAIRNESS OF THE INTERNAL EVALUATION PROCESS BY THE TEACHERS.



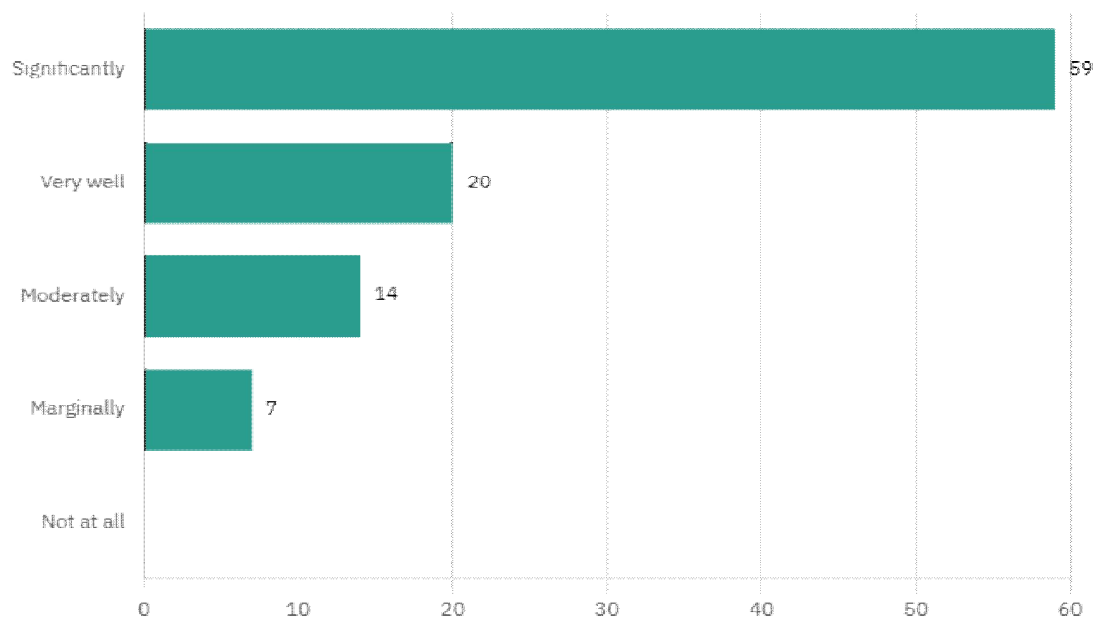
Q6. WAS YOUR PERFORMANCE IN ASSIGNMENTS DISCUSSED WITH YOU ?



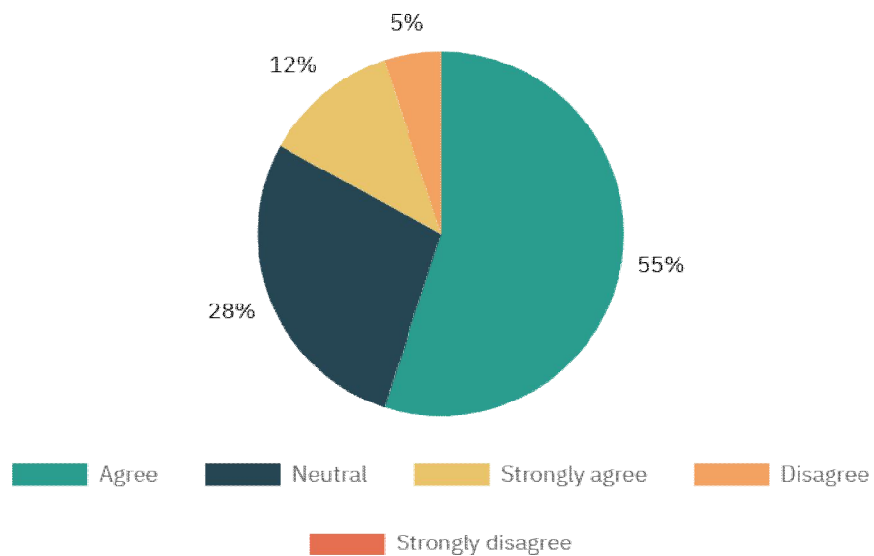
Q7. THE INSTITUTE TAKES ACTIVE INTEREST IN PROMOTING INTERNSHIP, STUDENT EXCHANGE, FIELD VISIT OPPORTUNITIES FOR STUDENTS.



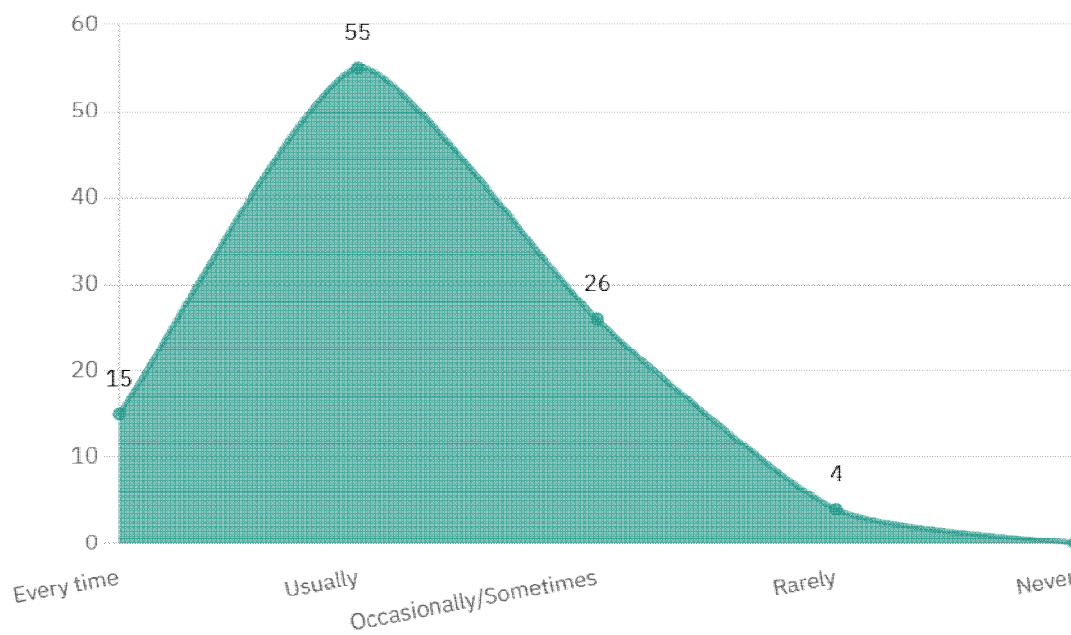
Q8. THE TEACHING AND MENTORING PROCESS IN YOUR INSTITUTION FACILITATES YOU IN COGNITIVE, SOCIAL AND EMOTIONAL GROWTH.



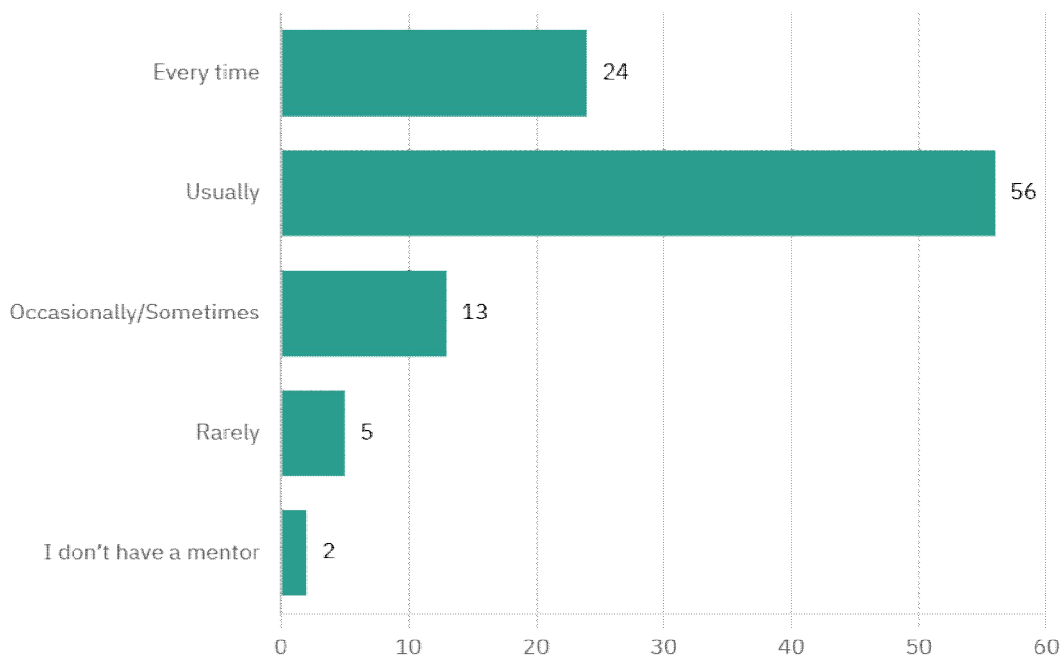
Q9. THE INSTITUTION PROVIDES MULTIPLE OPPORTUNITIES TO LEARN AND GROW.



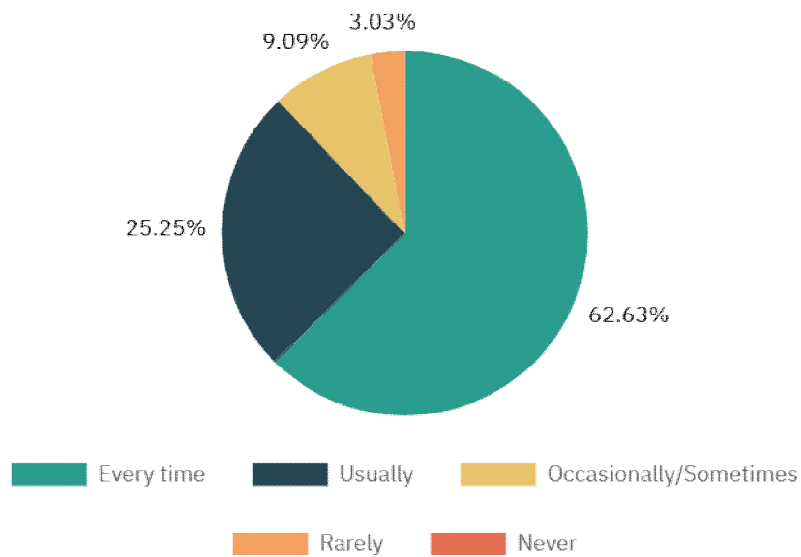
Q10. TEACHERS INFORM YOU ABOUT YOUR EXPECTED COMPETENCIES, COURSE OUTCOMES AND PROGRAMME OUTCOMES.



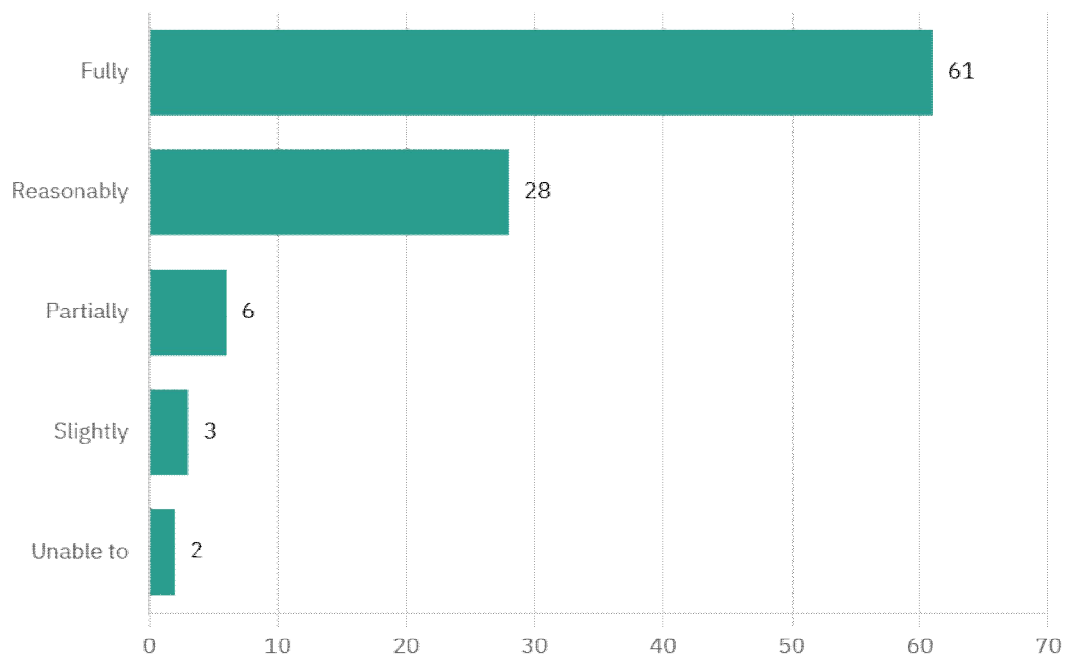
Q11. YOUR MENTOR DOES A NECESSARY FOLLOW-UP WITH AN ASSIGNED TASK TO YOU.



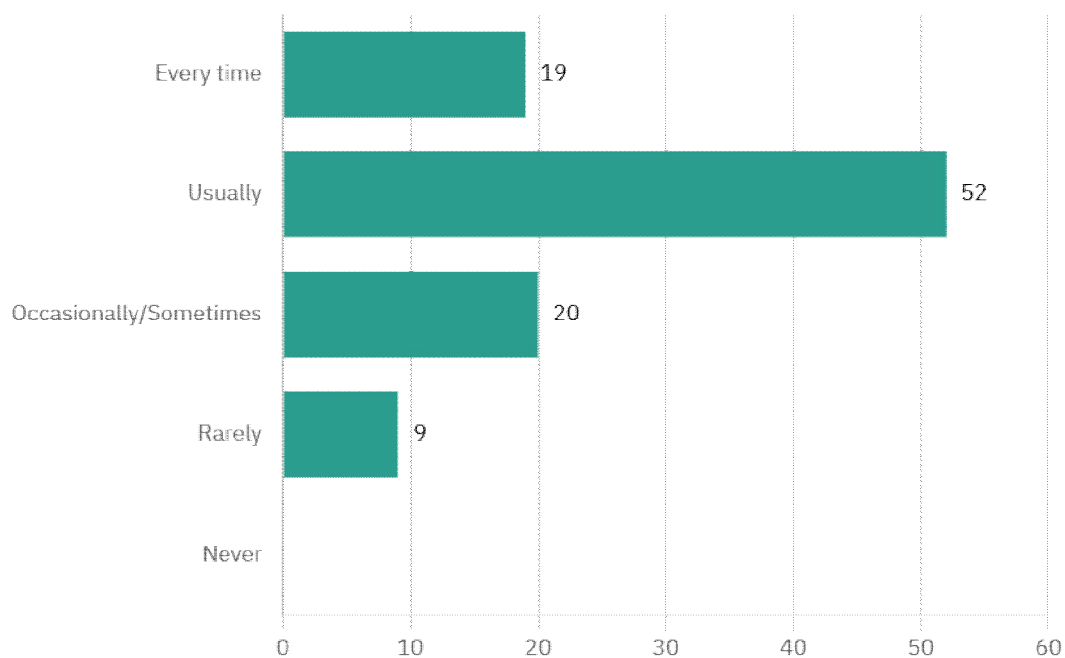
Q12. THE TEACHERS ILLUSTRATE THE CONCEPTS THROUGH EXAMPLES AND APPLICATIONS.



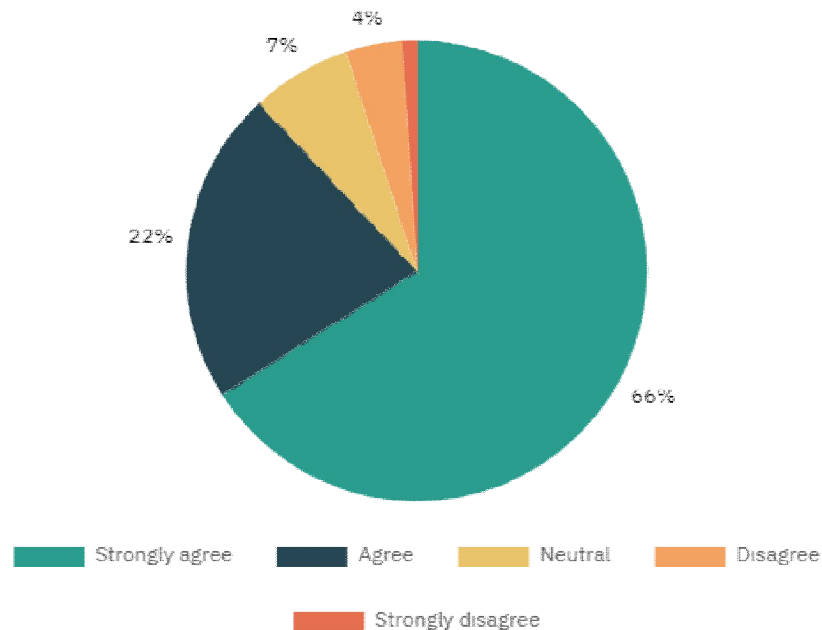
Q13. THE TEACHERS IDENTIFY YOUR STRENGTHS AND ENCOURAGE YOU WITH PROVIDING RIGHT LEVEL OF CHALLENGES



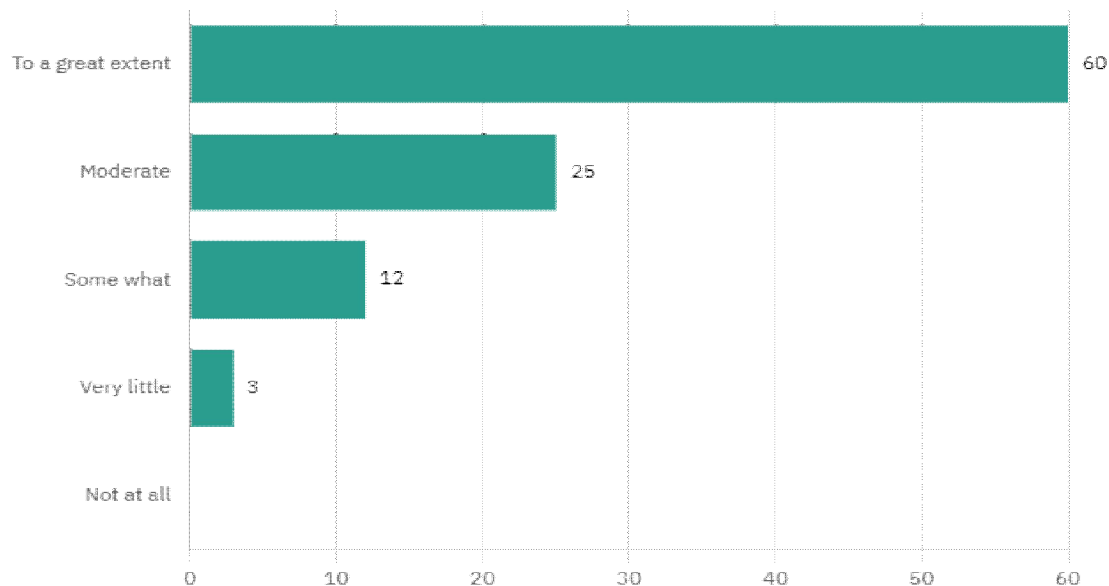
Q14. TEACHERS ARE ABLE TO IDENTIFY YOUR WEAKNESSES AND HELP YOU TO OVER COME THEM.



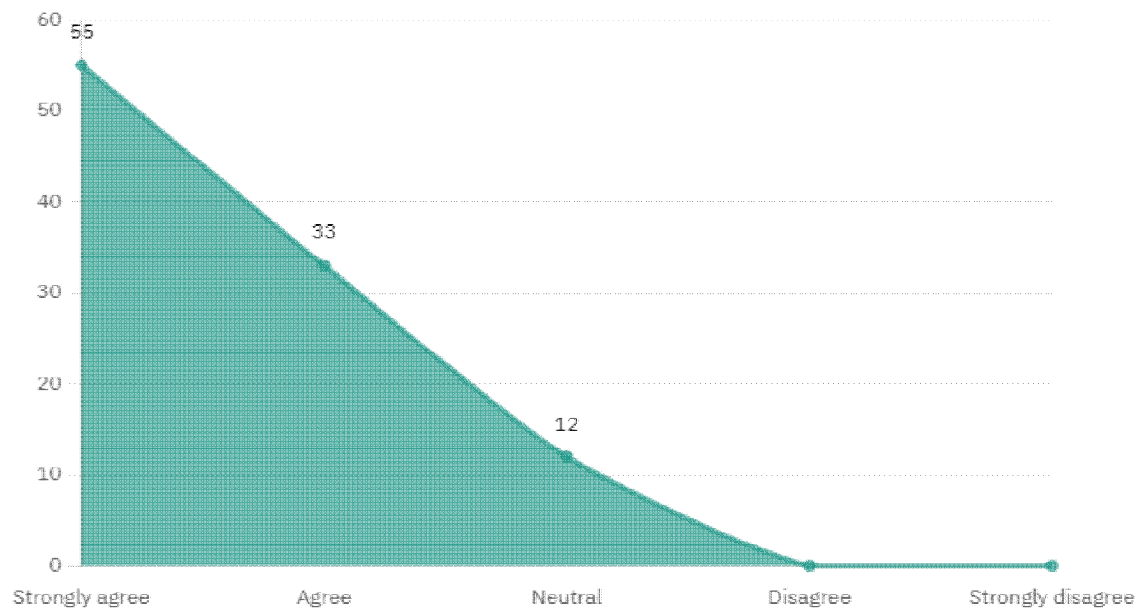
Q15. THE INSTITUTION MAKES EFFORT TO ENGAGE STUDENTS IN THE MONITORING, REVIEW AND CONTINUOUS QUALITY IMPROVEMENT OF THE TEACHING LEARNING PROCESS.



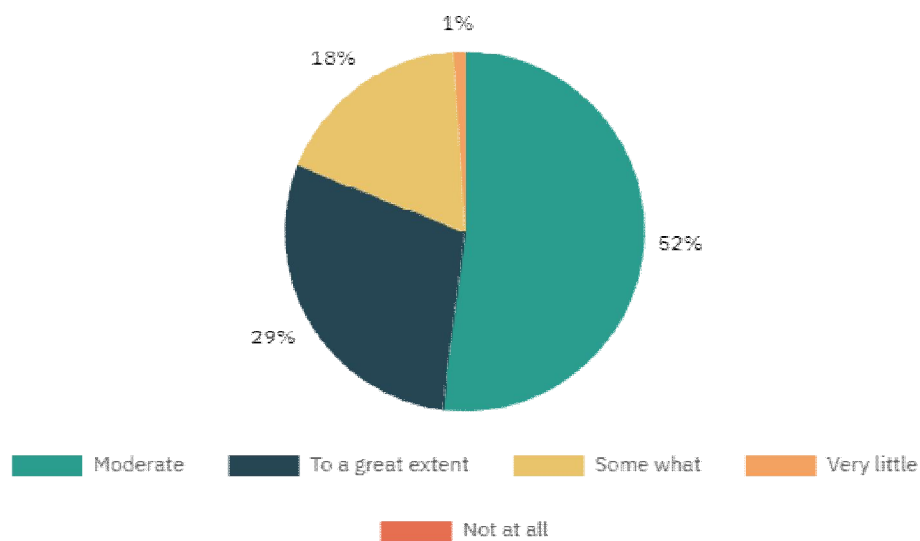
Q16. THE INSTITUTE/ TEACHERS USE STUDENT CENTRIC METHODS, SUCH AS EXPERIENTIAL LEARNING, PARTICIPATIVE LEARNING AND PROBLEM SOLVING METHODOLOGIES FOR ENHANCING LEARNING EXPERIENCES.



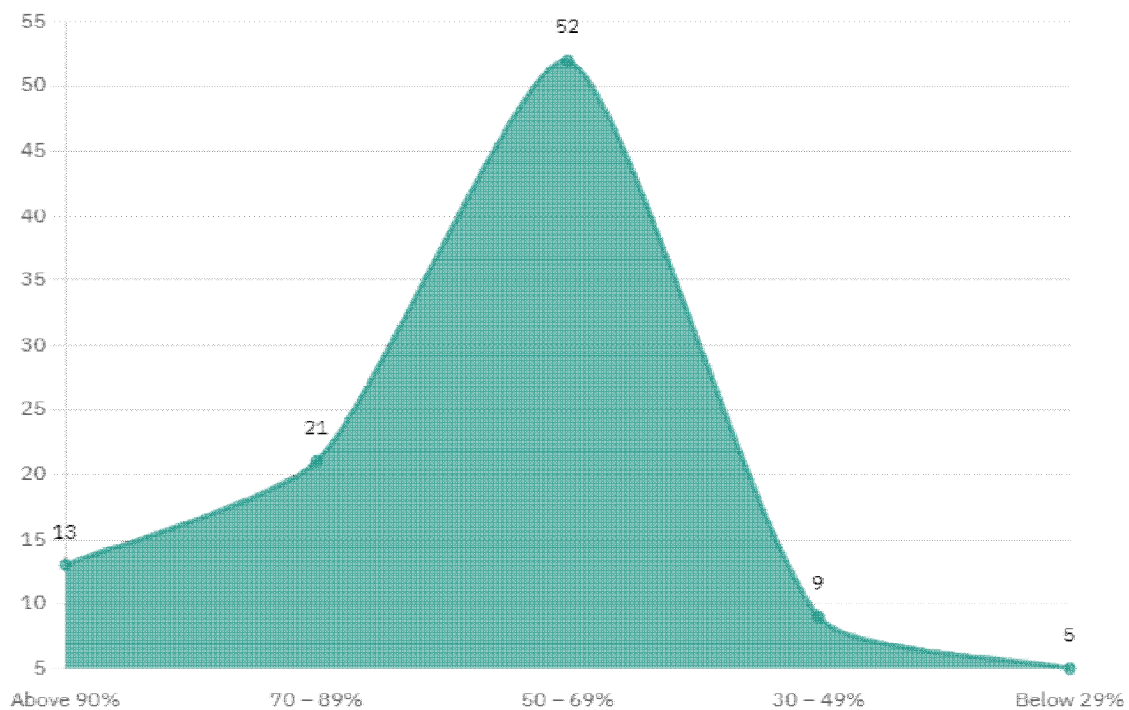
Q17. TEACHERS ENCOURAGE YOU TO PARTICIPATE IN EXTRA CURRICULAR ACTIVITIES.



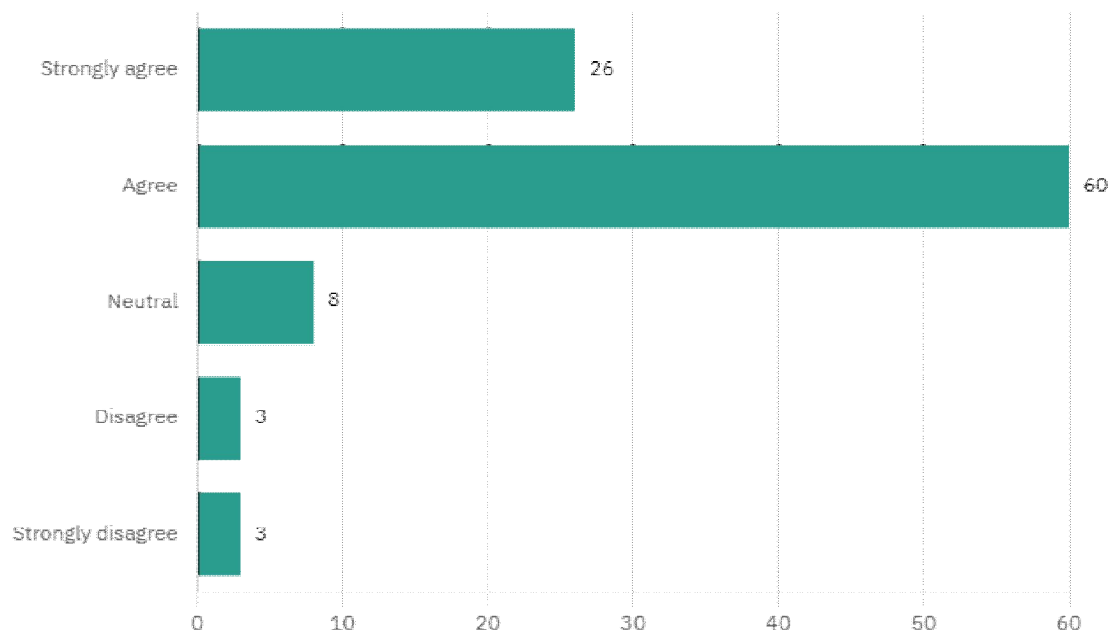
Q18. EFFORTS ARE MADE BY THE INSTITUTE/TEACHERS TO INCULCATE SOFT SKILLS, LIFE SKILLS AND EMPLOYABILITY SKILLS TO MAKE YOU READY FOR THE WORLD OF WORK.



Q19. WHAT PERCENTAGE OF TEACHERS USE ICT TOOLS SUCH AS LCD PROJECTOR, MULTIMEDIA ,ETC. WHILE TEACHING.



Q20. THE OVERALL QUALITY OF TEACHING-LEARNING PROCESS IN YOUR INSTITUTE IS VERY GOOD.



Q21. Give three observation/suggestions to improve the overall teaching-learning experience in your institution.

(Here we include only effective observations/suggestions given by the students)

1. ICT should be incorporated in teaching more effectively.
2. More subject choices should be given to students.
3. Career Guidance cell should give more efforts to create difference in outcome.
4. To enhance the experience of learning, more project work should be introduced.
5. Skill developments should be more in focus.
6. Remedial and bridge courses should be provided to weak students.


Principal
D.A.V. College
PUNDRI (HR.)